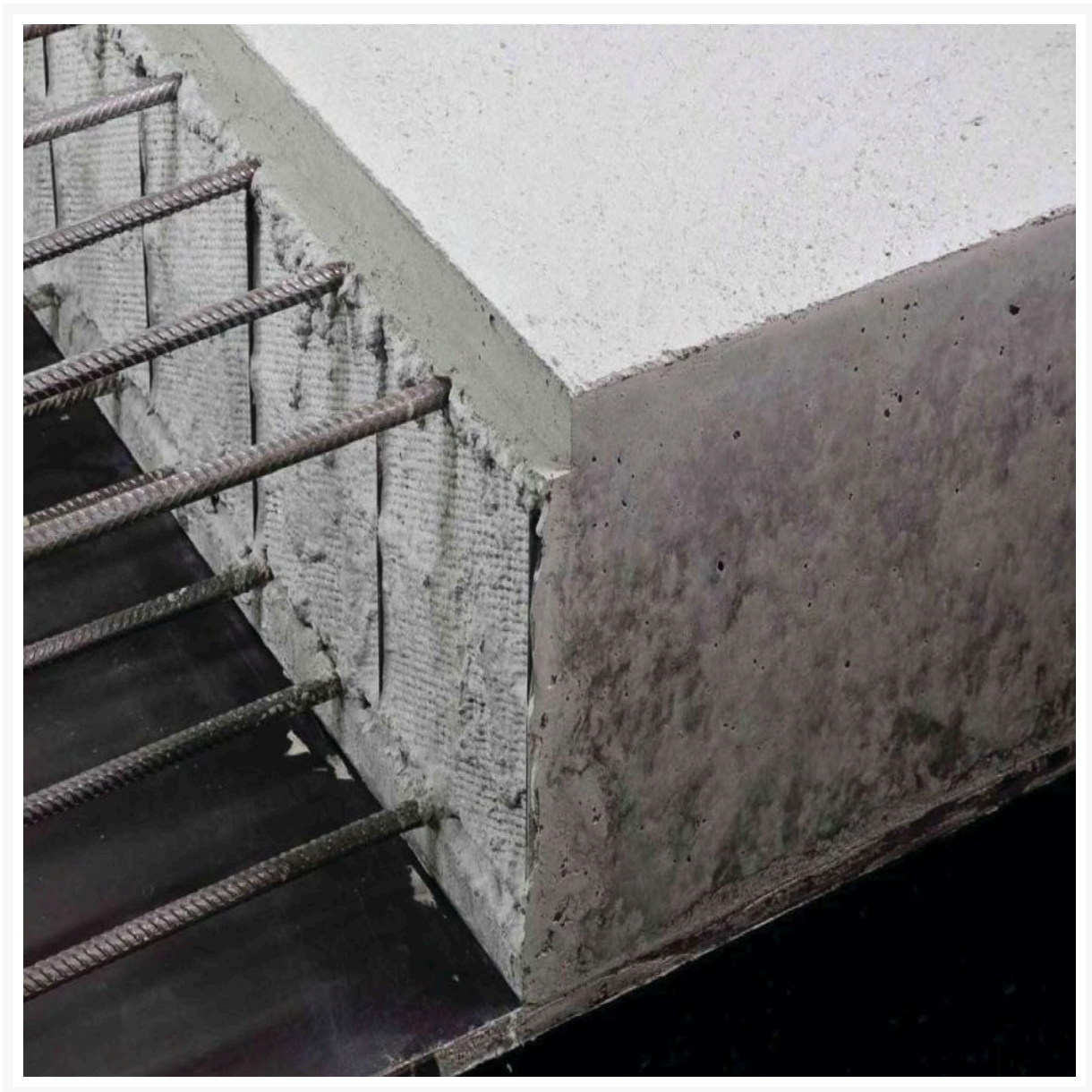
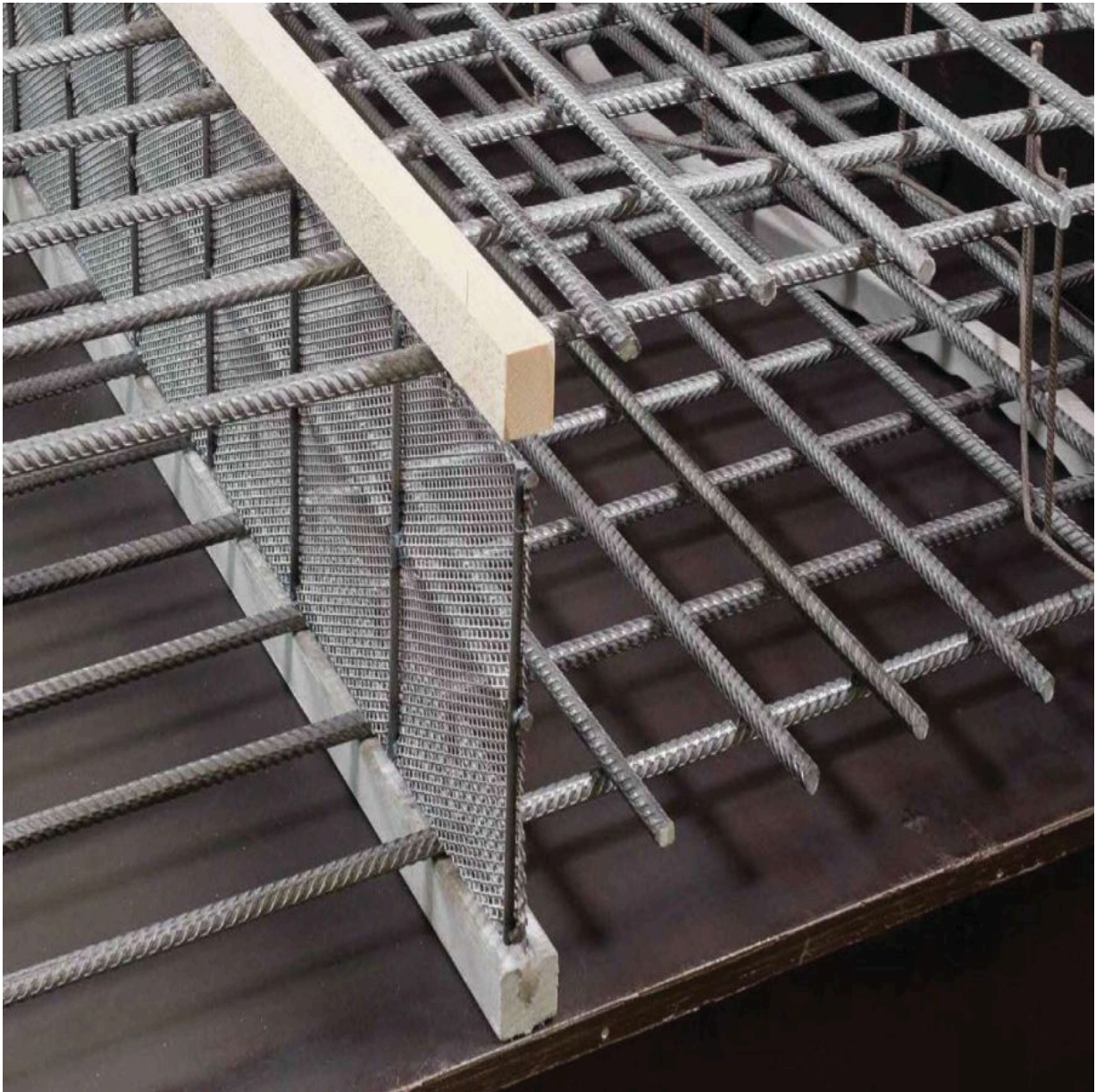


# Stremaform FINE Grade - 1000mm x 2400mm

## Product Images





## Short Description

---

MAX FRANK STREMAFORM

## Description

---

"

Stremaform® flat is used for medium-sized structural components, installed between the upper and lower reinforcement layers. Stremaform® in the concrete gives a rough surface that satisfies the requirements of

an indented joint according to DIN 1045-1 and/or Eurocode 2 and does not need scabbling. A metal water stop or a PVC/rubber waterbar support cage can be integrated in our factory if required. Delivery is made precisely in accordance with your layout specifications.

Stremaform® formwork elements are used as lost formwork in floor slabs, ceilings and walls. The expanded metal that is welded between the bars of a specially designed reinforcing steel mesh gives rise to a rough surface. The reinforcement can be continued without a break into the second concrete pour.

**Benefits include:**

- Stremaform® is suited for all types of working joints.
- Site drawings are quickly transformed into factory produced elements
- The formwork lies between the continuous reinforcement layers so that there is no need to interrupt the reinforcement
- Elements manufactured to your specifications
- No stripping or reworking necessary
- Available with or without metal waterstops, or PVC/rubber water bar cages
- Full range of accessories available including spacers with fibre-reinforced concrete rail, support anchors, upright elements, box out, shutters, and kickers for use between base slab/wall and wall/roof slab

## Additional Information

---

|        |                |
|--------|----------------|
| CODE   | 40-PV300FM10AU |
| U.O.M  | Each           |
| Swatch | no_selection   |

