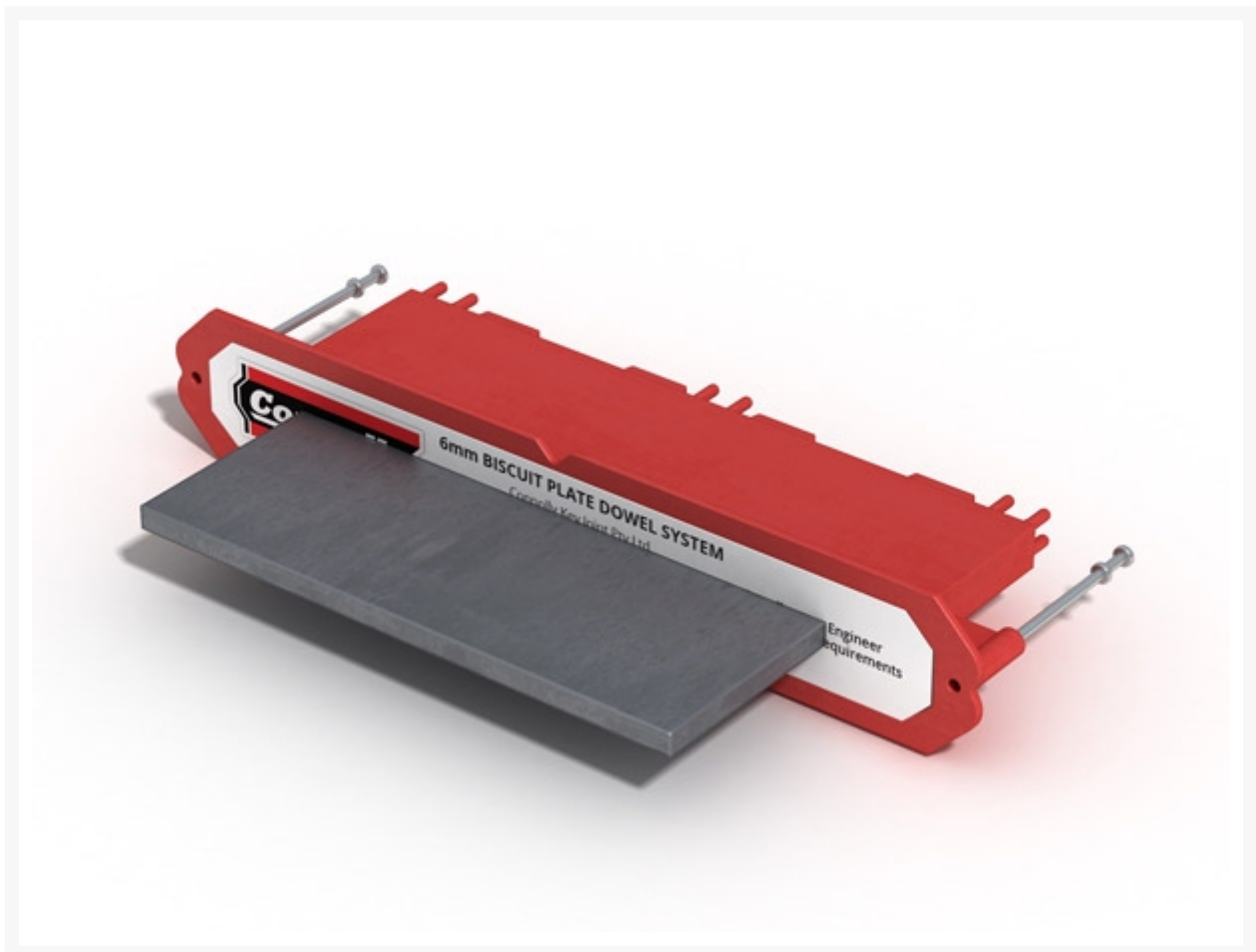
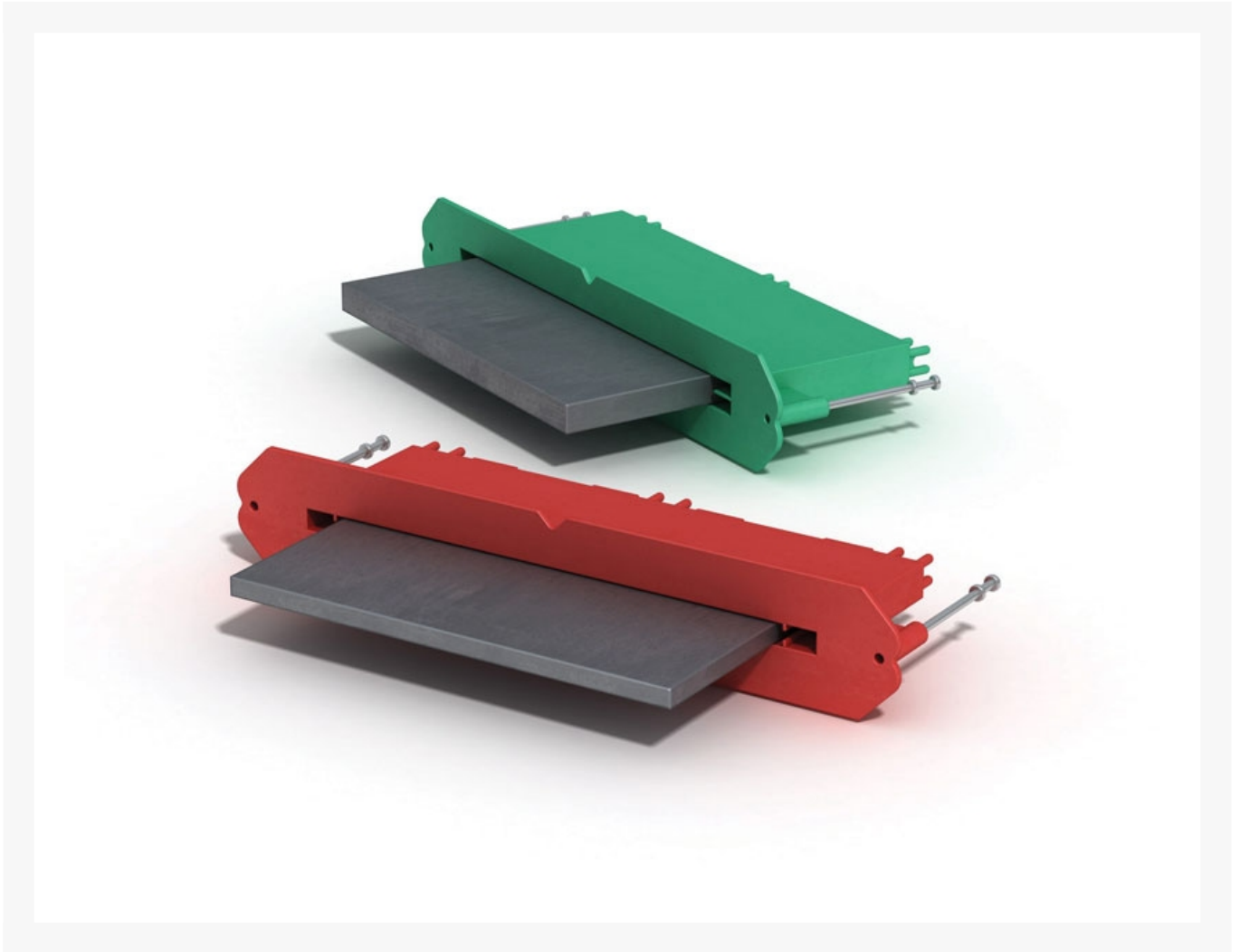


Connolly Biscuit Plate Dowel and Sleeve, 6mm, Black Finish

Product Images





Short Description

Red 6mm x 110mm x 150mm Connolly Biscuit Plate Dowel and Sleeve, Black finish. Used for load transfers across the joints in solid-concrete projects.

Description

Connolly Biscuit Plate Dowels and Sleeves are designed to transfer loads across construction joints in slab-on-ground applications. The plastic sleeve encases one half of the plate dowel to de-bond the dowel from the concrete. Connolly Biscuit Plate Dowels allow for expansion, contraction and lateral movement at the joint. Minimises differential deflection between slabs.

Biscuit Plate Dowels are available in 6mm and 10mm thickness in black or hot-dip galvanised finish. With pre-installed nails, and V-notches on all sides, they can be easily and accurately installed on conventional formwork, ensuring perfect dowel alignment. Injection moulded from polystyrene for accuracy and stiffness, the Biscuit Dowel Sleeve minimises the vertical movement across the joint. Biscuit Dowel Sleeves are colour coded (6mm red, 10mm green) to indicate the plate dowel thickness.

Features:

- Allows for contraction, expansion and lateral movement
- V-notches and pre-installed nails for ease of installation
- Available in 6mm and 10mm size, in Black or Galvanised finish
- Speeds up dowel installation
- Has both lateral and end expansion capabilities
- Ability to fix to timber and steel formwork with ease
- Ideally suited for construction joints

Additional Information

CODE	40-CBPS6MMBLK
U.O.M	Each
Weight	1
Colour	Red
Type	Black
Suits Substrate	Concrete
Finish	Black
Material	Poly
Brand	Connolly
Size	6 mm
Chuck Size	1

