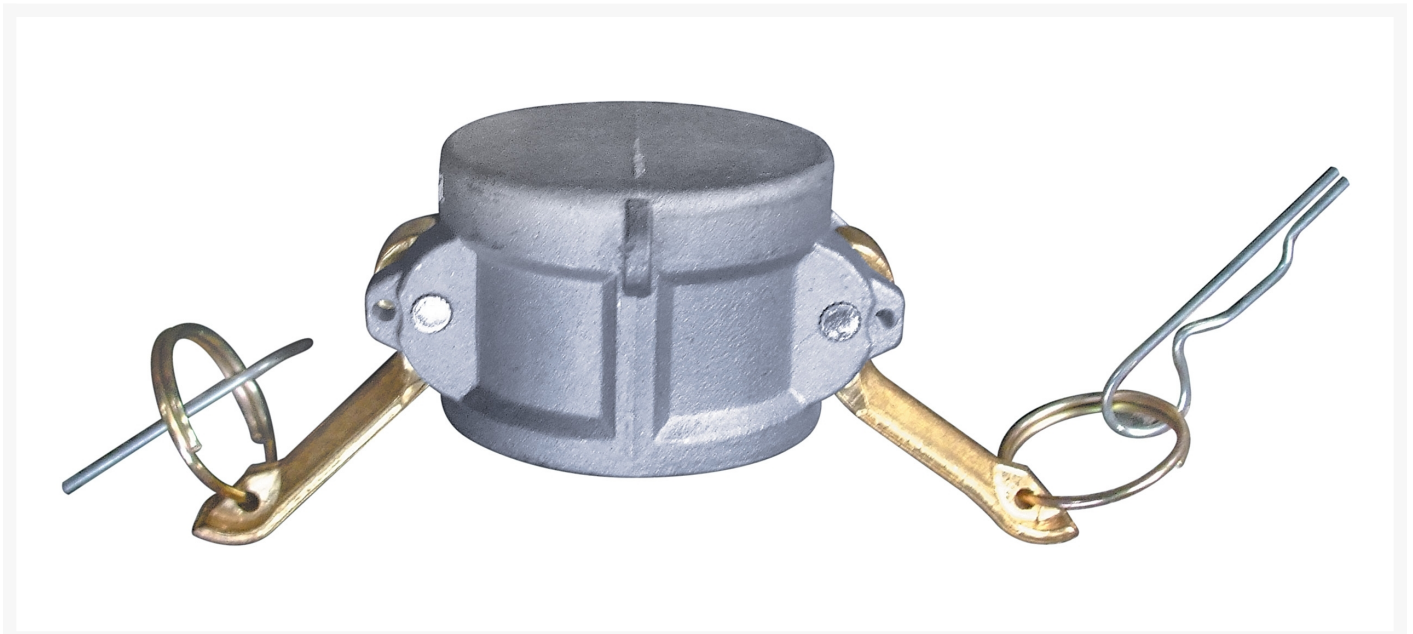


# Type DC Aluminum Camlock End Seal Dust Cap

## Product Images



## Short Description

Female type DC Aluminum Camlock, providing a suitable amount of protection from dust, debris and small

animals. Choose the required size from the list below.

## Description

---

Type DC (Dust Cap) aluminium female camlock end coupler. Used to coinserts, animals from from entering the system.

### Features/h4>

- **Quick and easy connection and disconnection**
- **For use with hoses, pipes and tubing with a male camlock attachment**

### Specifications

- **Available isin a rage of sizes including; 19mm, 25mm, 32mm, 38mm, 65mm, 75mm, 100mm, 150mm**
- **Also available in Stainless Steel, Brass, Nyglass & Polypropylene**
- **Supplied with locking pins**

### Applications

- **Commonly used on general industrial, mining, offshore/oilfield, chemical, food and beverage, agricultural.**

## Additional Information

---

CODE	AL-DC-16-WP
U.O.M	Each

## Product Options

---

Size:	19 mm
	25 mm
	32 mm
	38 mm
	50 mm
	65 mm
	75 mm
	100 mm
	150 mm

