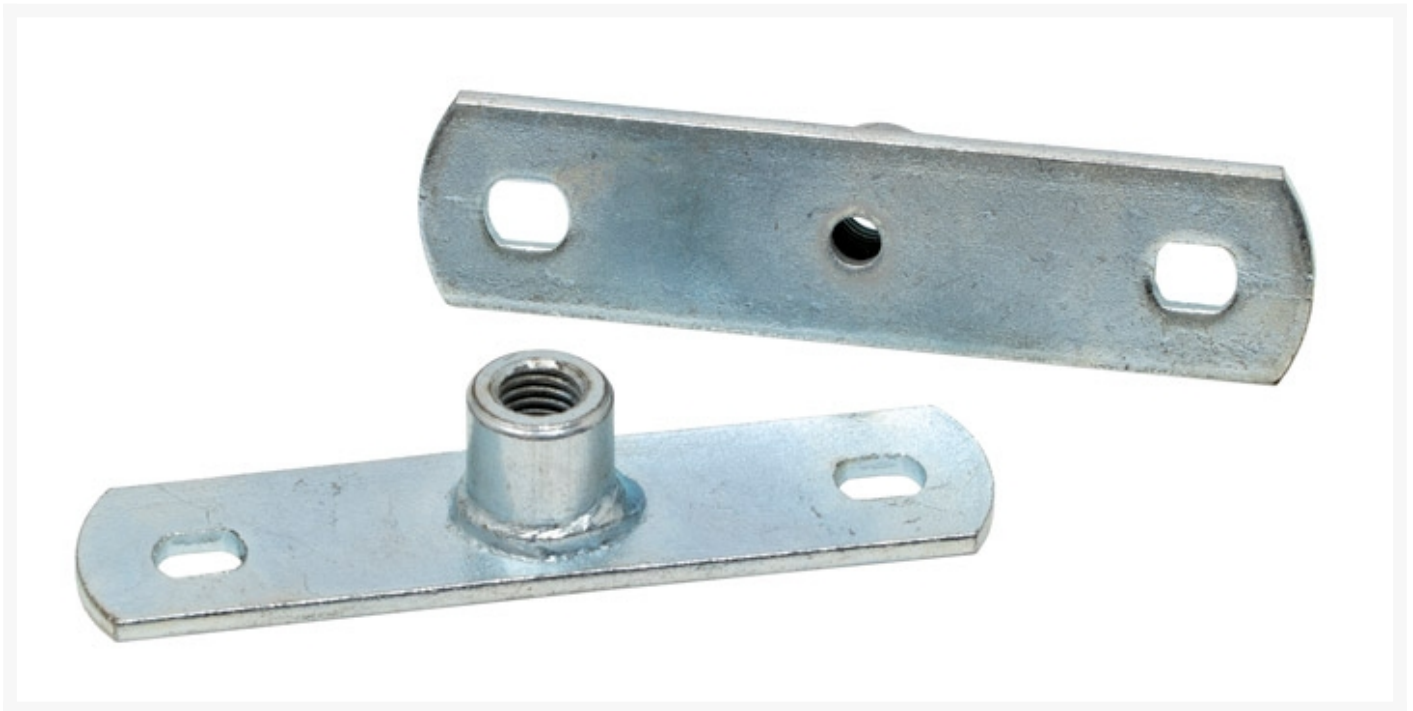


M10 Foot Plate Anchor - 100 Pack

Product Images



Short Description

Female M10 threaded rod hanger backplate / Anchor foot Plate with an M10 centre mounting point.

Description

Female M10 anchor foot plate used to hold threaded rod securely enabling the hanging of fixtures. Supplied with dual pre-drilled mounting holes on the backing plate. These M10 threaded rod centre mounting plate come in a box of 100.

Additional Information

CODE	40-FPLAM10
U.O.M	Pack
Weight	5
Colour	Silver
Coating	Zinc
Material	Steel
Size	M10

