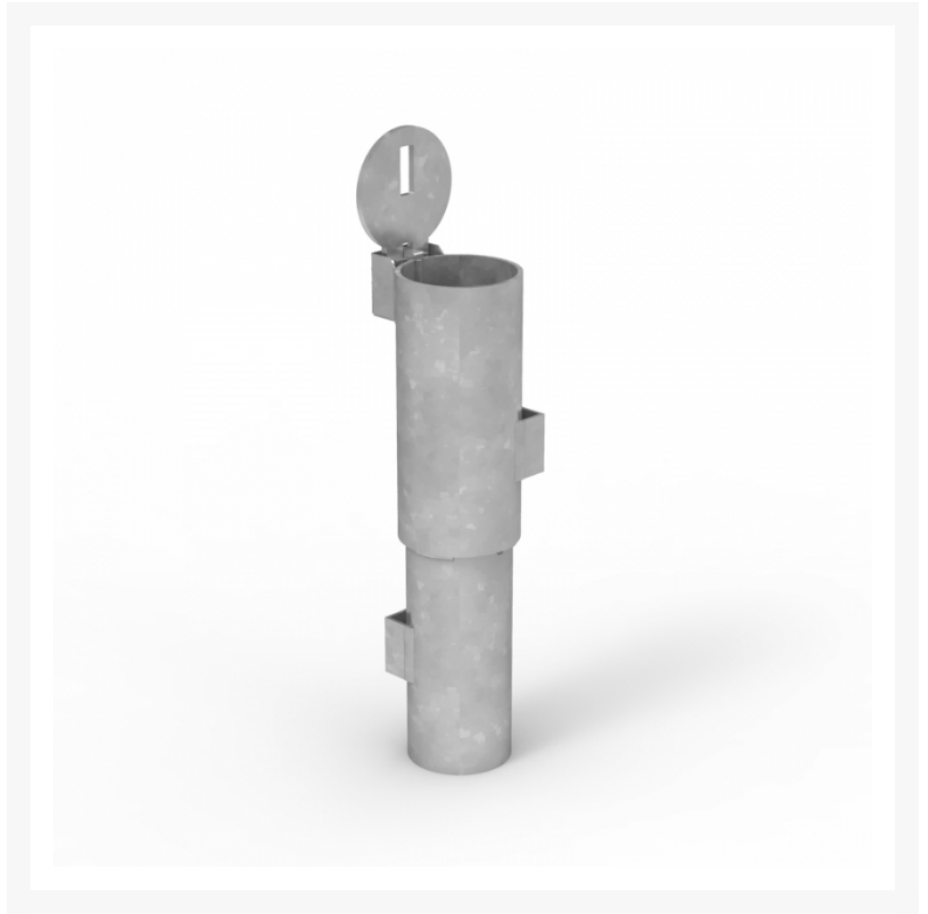

Round Removable In ground Bollard - 90mm with New Concrete Sleeve

Product Images





Short Description

90mm with new concrete sleeve. Size: 90mm diameter x 1150mm high.

Description

- Removable asset protection bollards
- Post locks to sleeve cap with padlock
- Core drilled sleeve for use in existing concrete
- New concrete sleeve for use in new concrete or where concrete foundation is necessary
- Size: 90mm diameter x 1150mm high

Additional Information

CODE	13-100165
U.O.M	Each
Height	1150 mm
Width	90 mm

