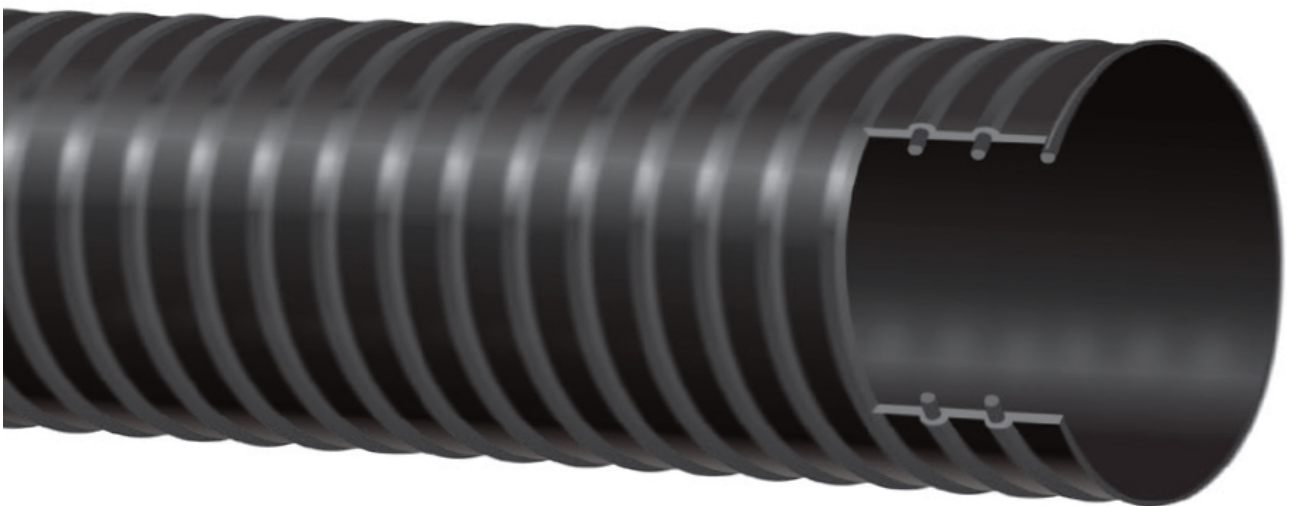


# Matflex bulk material suction hose. Sold in custom lengths by the metre.

## Product Images



## Short Description

Matflex suction hose. Sold by the metre - enter the number of meters required e.g. 10m = 10 to purchase. Standard length coils also available in 20m and 30m. Commonly used for bulk material suction and low pressure applications.

## Description

Black Matflex suction hose. Sold by the metre in continuous lengths up to 20 metres. Standard coil lengths are 20 or 30 metres, or alternatively Jaybro can supply a custom length of hose complete with fittings for your requirements.

Matflex hose is specially designed for low pressure bulk material suction.

With a temperature range of -5 degrees Celcius to +60 degrees Celcius, it is ideal for heavy duty bulk suction applications in construction, civil, sewerage, plumbing, drainage and industrial industries.

Jaybro's Matflex suction hose is constructed from black synthetic elastomer, meaning it can stand up to the rigors of harsh weather and heavy duty use. It's antistatic properties reduce spark risks.

Plus, you can personalise your hose to suit your particular project: Jaybro stocks a wide range of hose fitting and clamps including Camlock, Bauer, Travis and Strainers claw type fittings to suit your specific needs. We can fit any hosetail kit you require.

Jaybro keeps up to 95% of our product on the shelf and in stock so we can deliver to you, fast!

- Working temperature -15 degrees Celcius +60 degrees Celcius
- PVC reinforced helix construction
- Suitable for bulk material delivery or discharge at low pressures

CODE	Dimensions (mm)	Working Pressure	Ben Radius (mm)	Weight (kg/m)	Coil Length (m)
WU-HS-3700	38mm ID - 47mm OD	2 Bar - 25psi	80mm	0.57	20, 30m
WU-HS-3701	50mm ID - 61mm OD	2 Bar - 25psi	120mm	0.86	20, 30m
WU-HS-3702	65mm ID - 75mm OD	1 Bar - 15psi	200mm	1.09	20, 30m
WU-HS-3703	75mm ID - 90mm OD	1 Bar - 15psi	240mm	1.39	20, 30m
WU-HS-3704	100mm ID - 119mm OD	1 Bar - 15psi	320mm	2.56	20, 30m
WU-HS-3705	125mm ID - 146mm OD	1 Bar - 15psi	480mm	3.32	20, 30m
WU-HS-3706	150mm ID - 175mm OD	1 Bar - 15psi	720mm	4.89	20, 30m

## Additional Information

---

CODE	WU-HS-37-WP
U.O.M	Linear Metre
Weight	0.01
Hose Type	Liquid waste & vacuum evacuation
Material	Anti-static synthetic elastomer
Colour	Black
Style	-15°C to +60°C

