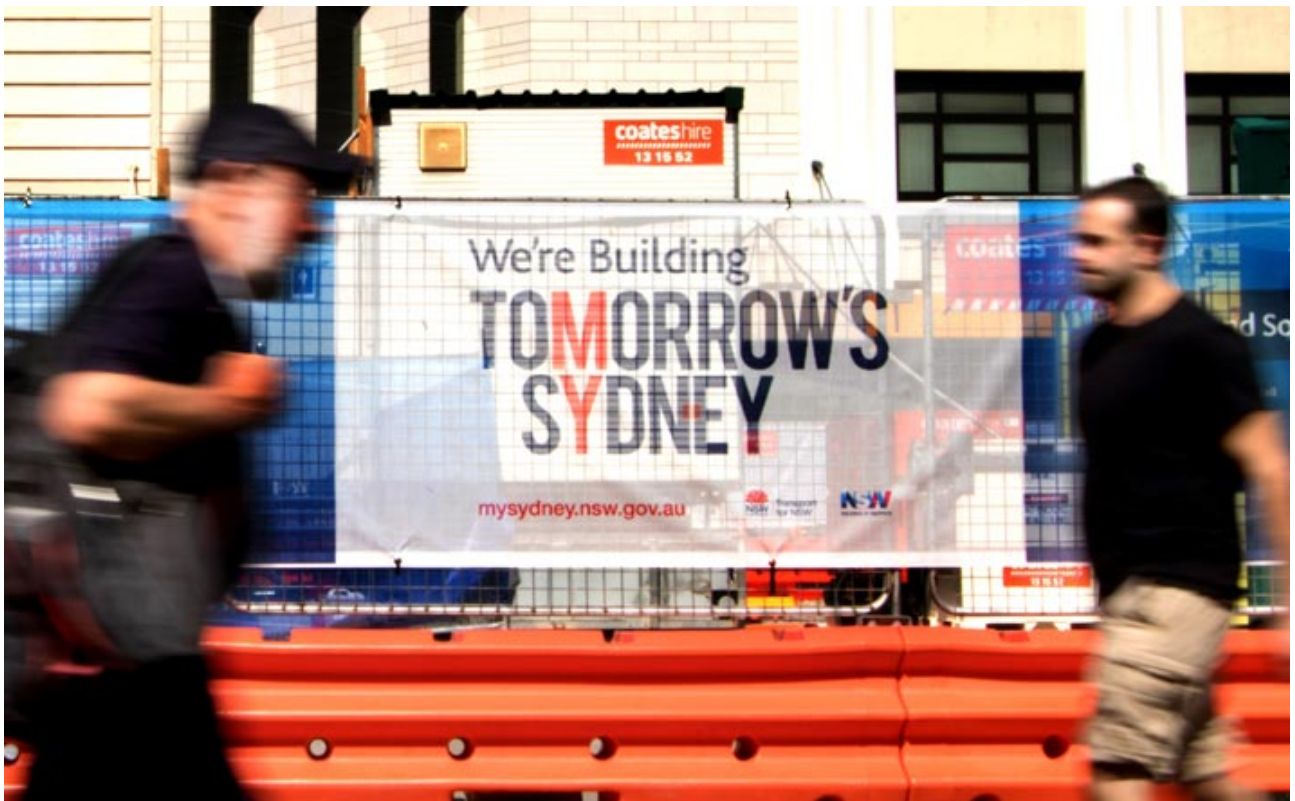


Open Weave Fence Fabric 25Mw X 1.6Mh

Product Images



Short Description

Banner mesh is constructed with a thinly woven Nylon core coated with a liquid state polyvinyl chloride (PVC). The PVC dries to form the mesh finish. While PVC is flammable it is a more fire resistant plastic than most general-purpose plastics because it contains more than 50% of chlorine.

These are our most popular sizes, but if you require a custom size, please contact our Site branding

team at 1300 885 364.

"

Description

"

Open weave fence fabric (scrim) is the ideal solution for high wind or coastal exposed sites. This printed shade cloth is made from an open weave that prints with the same high quality as our premium fence fabric, but the 50% block-out allows wind to pass through without causing the fence mesh to act like a sail.

Designed to have a long shelf life, with the ability to be rolled, unrolled and transported between sites, it has a site life of up to 2 years when correctly installed.

"

Additional Information

CODE	48-PFF2516OW
U.O.M	Roll
Mesh Width	25m

