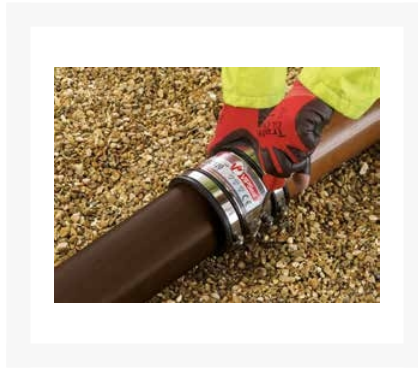


# VIPSeal Standard Coupling (VSC) 140-165mm

## Product Images





## Short Description

---

VIPSeal standard couplings join pipes of virtually any material or diameter. Size Range: 140-165mm

## Description

---

Primarily used in sewers, drains & other low and non-pressurised applications, VIPSeal standard couplings join pipes of any material or diameter. They are fully approved for use in various water networks including Sydney Water, South East Water and Unitywater, and have WSAA, Watermark & Australian Standards approval.

They are ideal for low pressure and non-pressurised applications such as sewers, drains and water pipes. Using VIPSeal couplings removes the need for a complicated assortment of joiners and reducers. In contrast to compression fittings, electrofusion or solvent cement methods, using an elastomeric sleeve in low-pressure pipe joining enables workers to repair pipes simply and reliably without specialist equipment.

Constructed from the highest quality elastomeric rubber, the VIPSeal couplings create a leak-proof seal. In addition, the couplings are bolstered by stainless steel tension bands, proving strength and resistance under heavy earth loads. To fit VIPSeal, simply slide the coupling onto each end of the pipes to be joined and tighten the tensioning bands to the recommended torque.

VIPSeal elastomeric couplings are manufactured in the UK from synthetic rubbers such as EPDM, SBR, NBR, and FKM synthetic rubber. The incorporation of a Grade 316 Stainless Steel metal shear band on the flexible coupling counters the effect of soil or other superimposed load, to ensure rigidity and integrity of the joint. Each coupling has a designed compatible pipe OD range and is suitable for connection to a wide range of pipe materials including PVC, PE, vitrified clay, asbestos cement, concrete, galvanised iron and cast or ductile iron. Note that the couplings are not suitable for use with drinking water. They offer excellent resistance to sewerage and drainage effluent and are ideal for using as:

- a coupling to join pipes
- repairing damaged sections of pipe
- where a post or lateral connection is required
- joining different diameters of pipe
- joining short lengths of pipe

### SPECIFICATIONS

- 140 mm - 165 mm

- 316 Stainless tensioning bands
- Elastomeric rubber construction
- Available in a range of other sizes

**APPROVALS**

- AS/NZS 4327:1995 Metal-banded flexible couplings for low-pressure applications
- Unitywater approved
- Sydney Water approved
- South East Water approved
- Approved to WaterMark scheme
- WSAA approval

**ALSO AVAILABLE**

When pipe diameters differ significantly, VIPSeal elastomeric sleeves act as a bush when fitted to the smaller pipe. By creating a larger diameter, the pipe can then accommodate a standard coupling. Available for a range of pipe OD diameters, bushes help to create the ideal seal on tricky jobs. Take a look at the [range of bushes here](#).

**Additional Information**

---

|       |         |
|-------|---------|
| CODE  | VSC165A |
| U.O.M | Each    |
| Width | 120 mm  |

