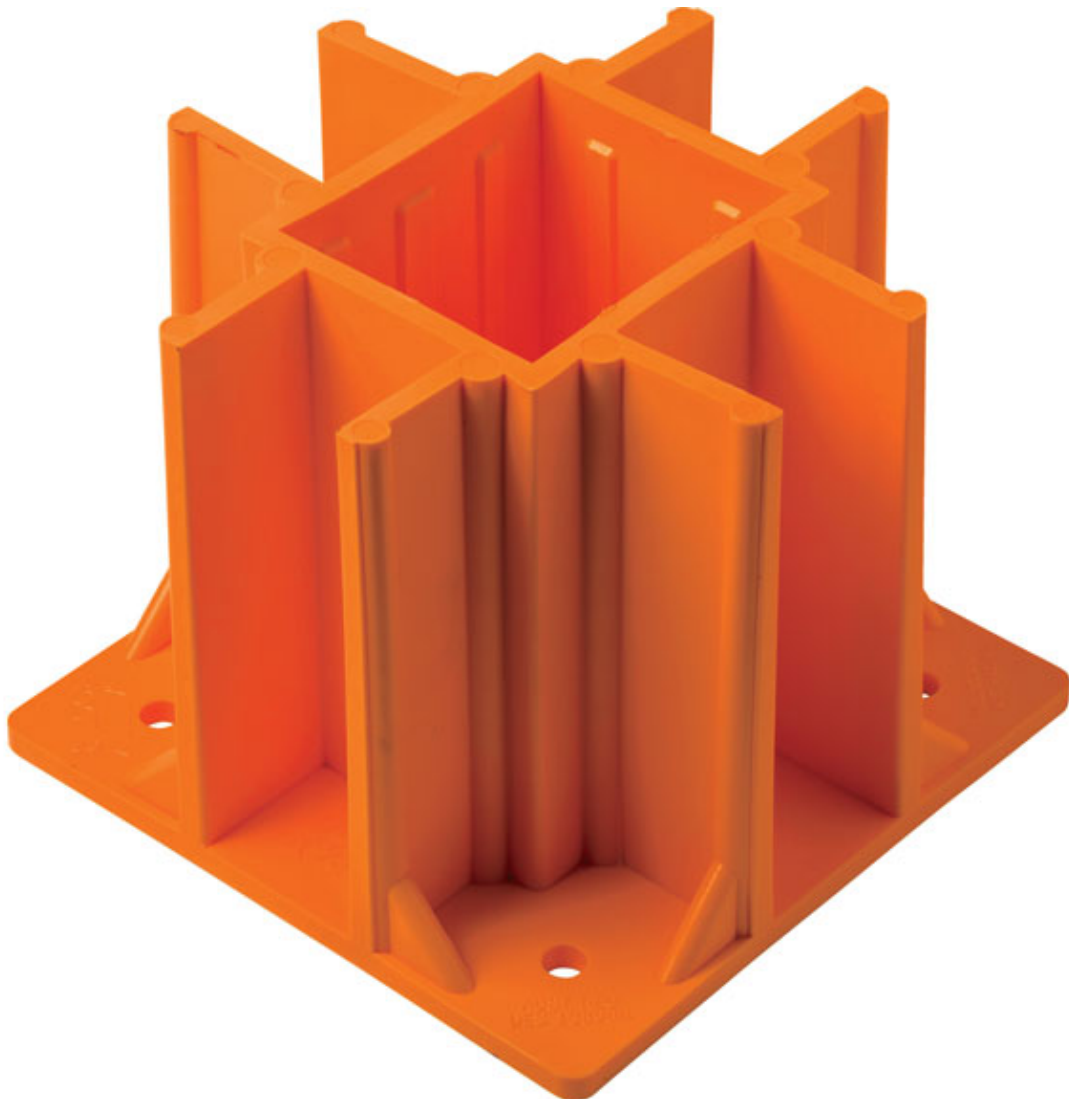


Safety Base - Temporary Hand Rail Socket

Product Images



Short Description

Safety Base - Bright orange temporary handrail socket for temporary hand rail support on site.

Description

The Safety Base™ is a super strong temporary handrail base for use on domestic and commercial building sites. The body of the safety handrail base is made of 6 mm thick polyurethane plastic so it is lightweight yet strong.

- Australian designed, manufactured and owned
- Meets Australian and New Zealand Standards AS/NZ 4994.1 2009 Temporary Edge Protection
- Measures 90 mm x 90 mm
- Toeboard measures 20 mm thick
- Base plate measures 8 mm thick, with 4 x 10 mm holes
- Colour: Bright orange
- Available in boxes of 6 or 12 units

Additional Information

CODE	31-100040
U.O.M	Each
Weight	1
Colour	Orange
Length	90 mm
Width	90 mm

