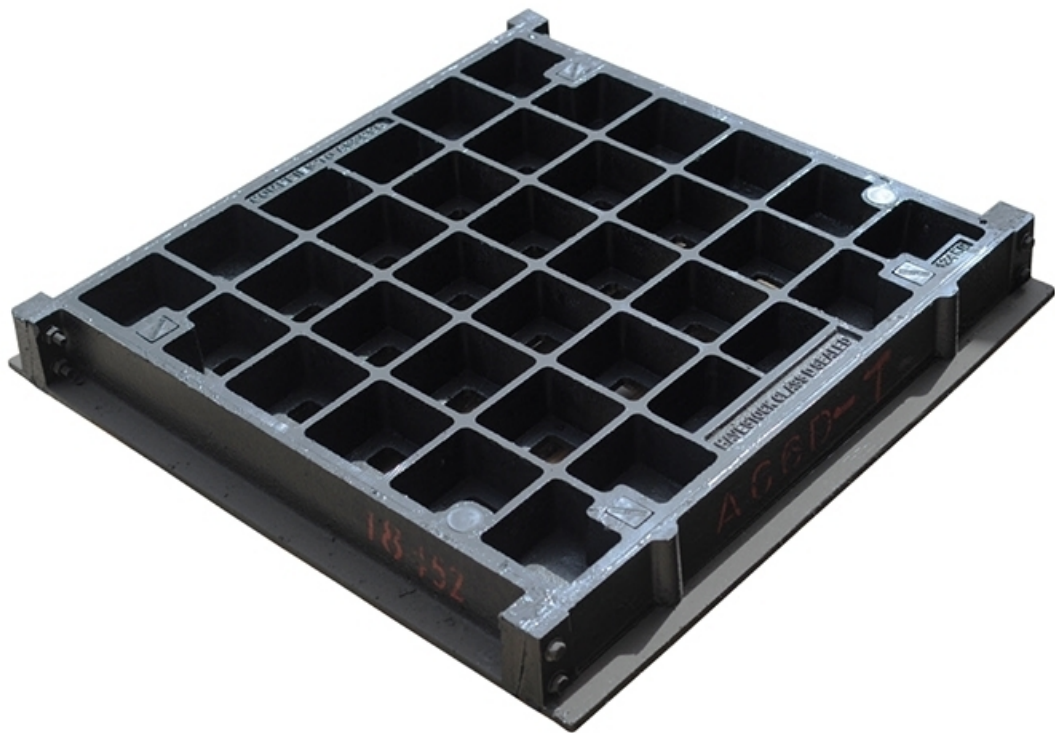


Concrete Infill Ductile Iron Cover and Frame 900 x 600 mm Class D

Product Images



Short Description

900 x 600mm Class D Ductile Iron Infill Cover and Frame

Description

Commonly used for junction pits and onsite detention tanks, Jaybro's range of infill covers are designed to allow easy access for maintenance crews. The heavy duty frame is designed to be cast into a concrete slab in the tank or above the pit, and the cover is filled with concrete, making the pit or tank sealed against gas, air and water ingress. Manufactured and tested to meet Australian Standard AS3996.2006 Access Covers and Grates, this range of covers is available rated to Class D or Class B. This infill cover is Class D.

Class D loading is typically for carriageways of roads and areas open to commercial vehicles (heavy duty). Class D classified products have a nominal wheel loading of 8000 kg, a serviceability design load of 140kN and an ultimate limit state design load of 210kN.

Suitable for:

- Roads
- Carparks
- Driveways open to commercial traffic
- OSD Tanks on commercial property

Specifications:

- Class D Heavy Duty
- Tested to AS3996.2006
- 900 x 600 mm
- Bolt down
- Gas, Air and Water Tight
- Nominal Wheel Loading 8000 kg
- Available in concrete surround

Additional Information

CODE	INDICF0906D
U.O.M	Each
Weight	250
Dimensions	900 x 600 mm
Length	900 mm
Width	600 mm
Type	Class D

