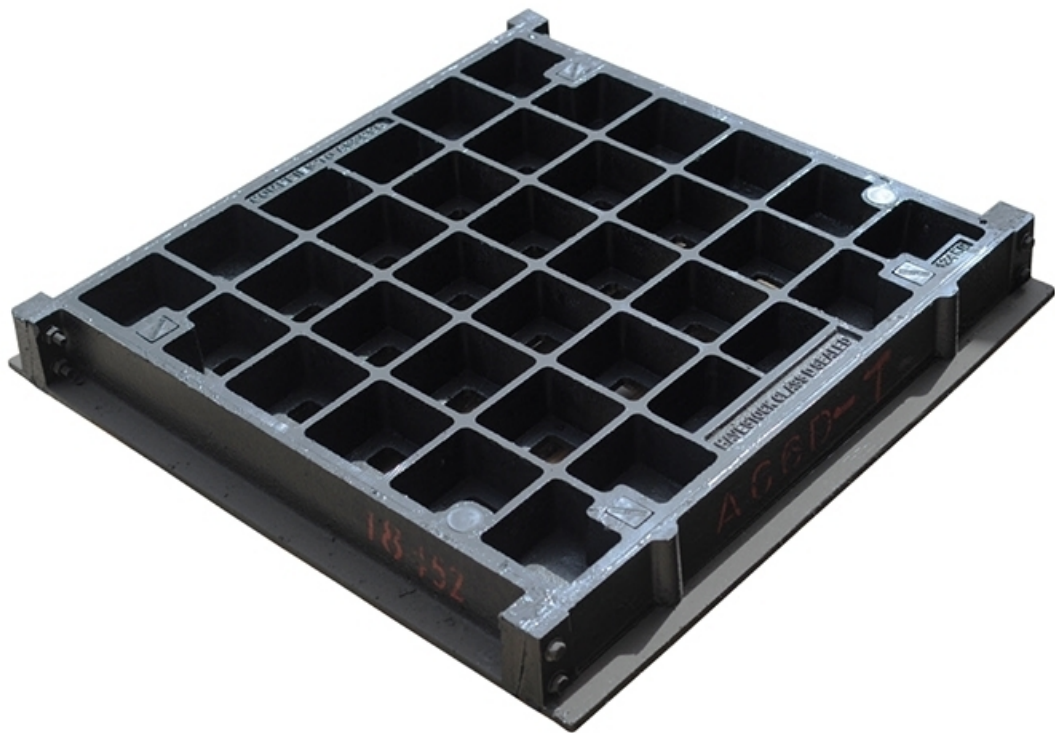


# Concrete Infill Ductile Iron Cover and Frame 900 x 600mm Class B

## Product Images



## Short Description

---

900 x 600 mm Class B Ductile Iron Infill Cover and Frame meets AS3996.2006 Access Covers and Grates.

## Description

---

Commonly used for junction pits and onsite detention tanks, Jaybro's range of infill covers are designed to allow easy access for maintenance crews. The heavy duty frame is designed to be cast into a concrete slab in the tank or above the pit, and the cover is filled with concrete, making the pit or tank sealed against gas, air and water ingress. Manufactured and tested to meet Australian Standard AS3996.2006 Access Covers and Grates, this range of covers is available rated to Class D or Class B. This infill cover is Class B.

Class B loading is typically for areas including footways and light tractor paths that are accessible to vehicles (excluding commercial vehicles) or livestock (light duty). Class B classified products have a nominal wheel loading of 2670 kg, a serviceability design load of 53kN and an ultimate limit state design load of 80kN.

### **Suitable for:**

- OSD Tanks
- Junction Pits
- Streetscape Areas
- Footpaths

### **Specifications:**

- Class B Light Duty
- Tested to AS3996.2006
- Measures 900 x 600 mm
- Bolt down
- Gas, Air and Water Tight
- Nominal Wheel Loading 2670kg

## Additional Information

---

CODE	INDICF0906B
U.O.M	Each
Weight	250
Dimensions	900 x 600 mm
Length	900 mm
Width	600 mm
Type	Class B

