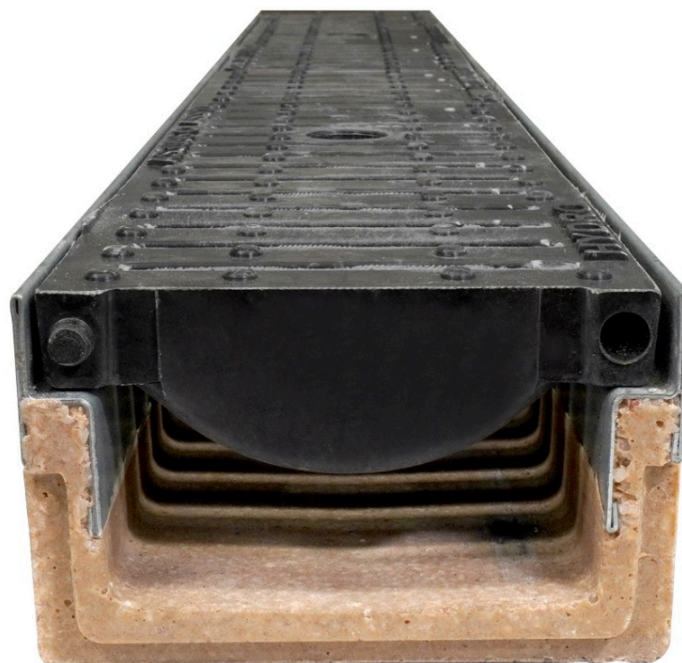


Mea Access Shallow Polymer Concrete Drainage Chanel with Class D Composite Plastic Grate

Product Images





Description

The MEA Access Shallow Polymer Concrete Drainage Channel with Class D Composite plastic grate is a versatile and durable drainage solution that is ideal for a wide range of applications. It is made of high-quality MEA Polymer concrete, which is known for its durability, strength, and resistance to chemicals and weathering. The composite plastic grate is class D and perfect for crossover and driveway drains. It is also UV stabilize, making it resistant to fading and discoloration. The MEA Access Polymer Concrete Drainage Channel with Class D composite plastic grate is easy to install and maintain, and it has a long service life. It is ideal for use in a wide range of applications, including:

- Driveways
- Carparks
- Walkways
- Landscaped areas

Features and benefits:

- Made of high-quality MEA Polymer concrete
- Lightweight for easy installation
- Easy to install and maintain
- Long service life

Additional Information

CODE	ACP-155561K3-webproduct
U.O.M	Each

Product Options

Channel depth:	60mm
	80mm

