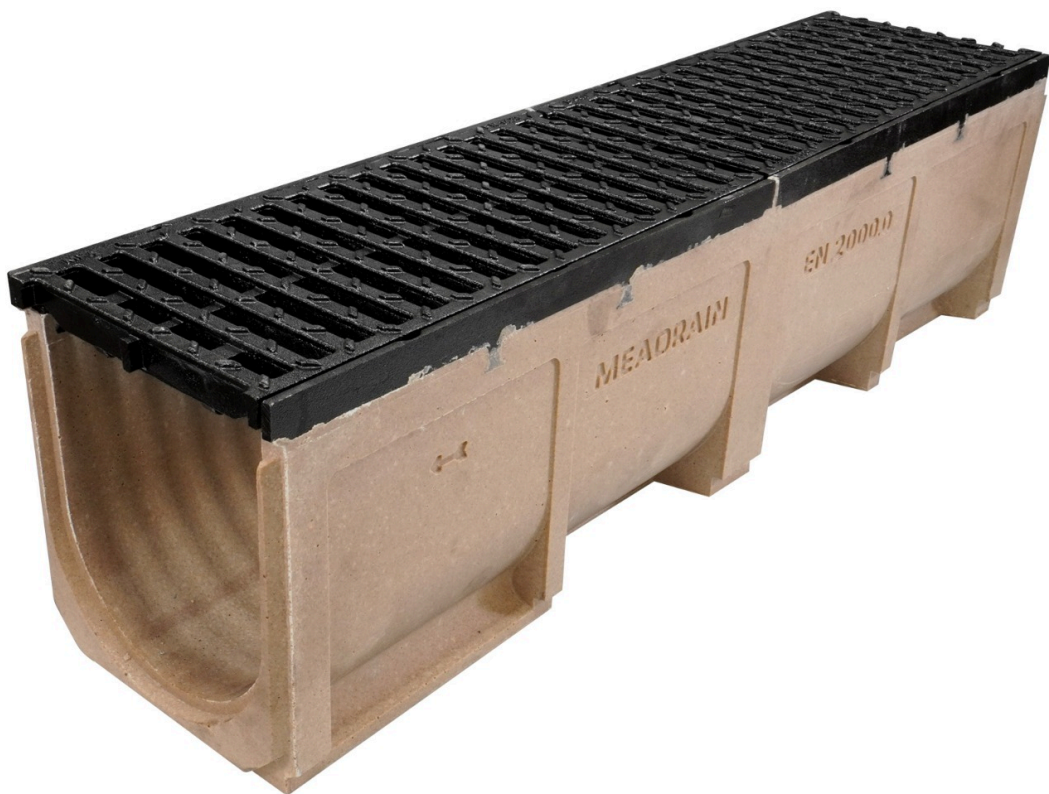


# MEA Drain Supreme C2000 CI Edge Polymer Concrete Channel 280mm Total Depth C/W DI slotted grate CL E PROFIX

## Product Images





## Short Description

---

MEA Drain Supreme C2000 CI Edge Polymer Concrete Channel 280mm Total Depth C/W DI slotted grate CL E PROFIX

## Description

---

The MEA Drain Supreme CI Edge Channel with Ductile Iron slotted Class E Grate is a durable and reliable drainage solution for commercial and industrial projects. It is made of high-quality polymer concrete and features a cast iron edge rail for added strength and longevity. The Class E ductile iron slotted grate provides larger intakes to allow for higher volumes of stormwater. The system includes the profix rapid locking system to lock and prevent grate movement

Features:

- Variety of widths and depths available
- Made of high-quality polymer concrete for durability and longevity
- Cast iron edge rail for added strength and corrosion resistance
- Ductile iron heelguard grate
- Class E grate

Benefits:

- Provides efficient drainage of stormwater and other liquids
- Helps to protect against flooding
- Long-lasting cost-effective solution

Applications:

- Petrol stations and driveways
- Commercial and industrial properties
- Cross over drainage

## Additional Information

---

CODE	ACP-157531K2
U.O.M	Each
Material	Polymer Concrete
Channel Depth	280mm
Channel Width	200mm
Range	Supreme
Channel Length	1000mm
Grate Safety	Bicycle Safe
Load Rating	Class E
Locking Type	Profix
Grate Material	Ductile Iron
Channel Meterial	Polymer Concrete
Swatch	no_selection

