

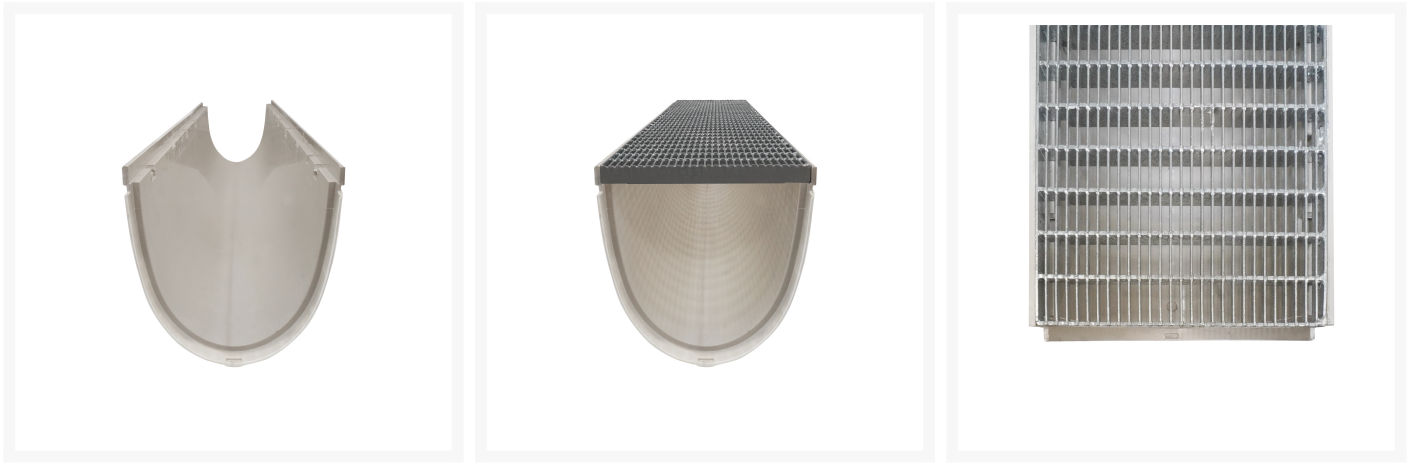
---

# Mearin Plus 300 GRP Channel 397mm Deep C/W ductile iron heelguard grate, class D, CLIPFIX

## Product Images

---





## Short Description

---

Mearin Plus 300 GRP Channel 397mm Deep C/W ductile iron heelguard grate, class D, CLIPFIX

## Description

---

The Mearin Plus channel is a lightweight, durable, and easy-to-install drainage channel that is ideal for use in heavy trafficable areas. It is made of GRP (glass-reinforced plastic), which is resistant to chemicals, salt, and oils. The ductile iron Class D heelguard grate provides a sleek black finish, while the Clipfix locking system secures the grate down for added safety. Features • Variety of depths available • Made from lightweight and durable GRP material • Class D grate to AS3996-2019 • Versatile for a variety of applications Benefits • Easy to install and maintain • Strong and durable • Eco-friendly • Corrosion resistant channel • Excellent value for money Applications • Freeway and motorway Carriways Warehouse & Industrial sites

## Additional Information

---

CODE	ACP-140400K3
U.O.M	Each
Material	Glass Reinforced Plastic
Channel Depth	397mm
Channel Width	300mm
Range	Mearin Plus
Channel Length	1000mm
Grate Safety	Heelguard
Load Rating	CLASS D
Locking Type	Clipfix
Grate Material	Ductile Iron
Channel Meterial	Glass Reinforced Plastic
Swatch	/0/4/04_1_mea.jpg.tmp

