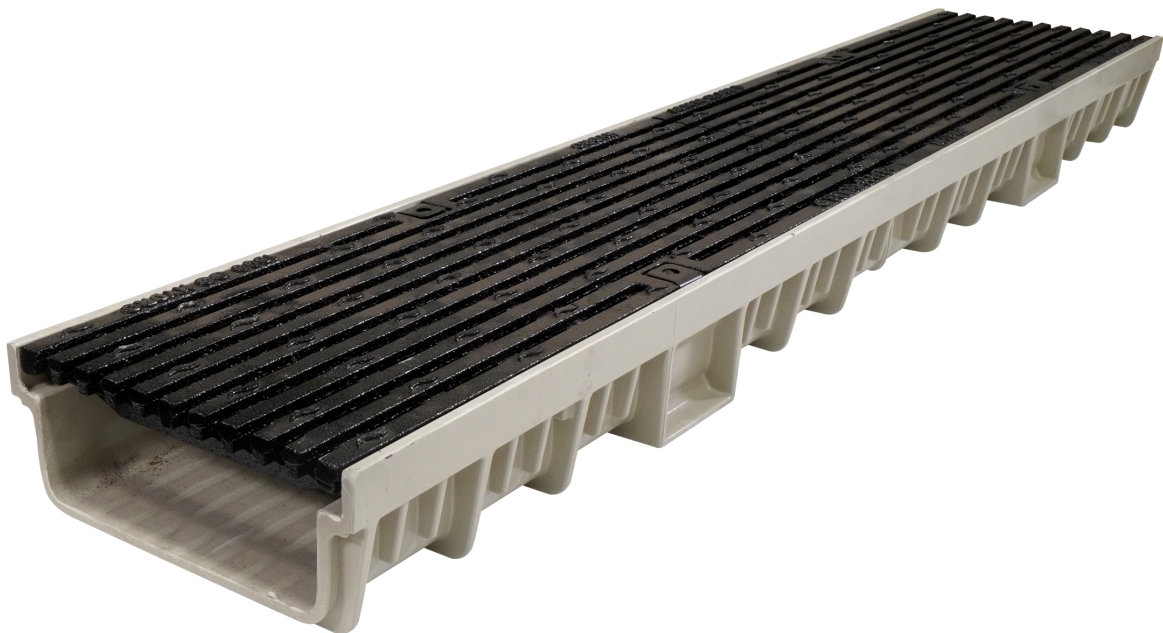


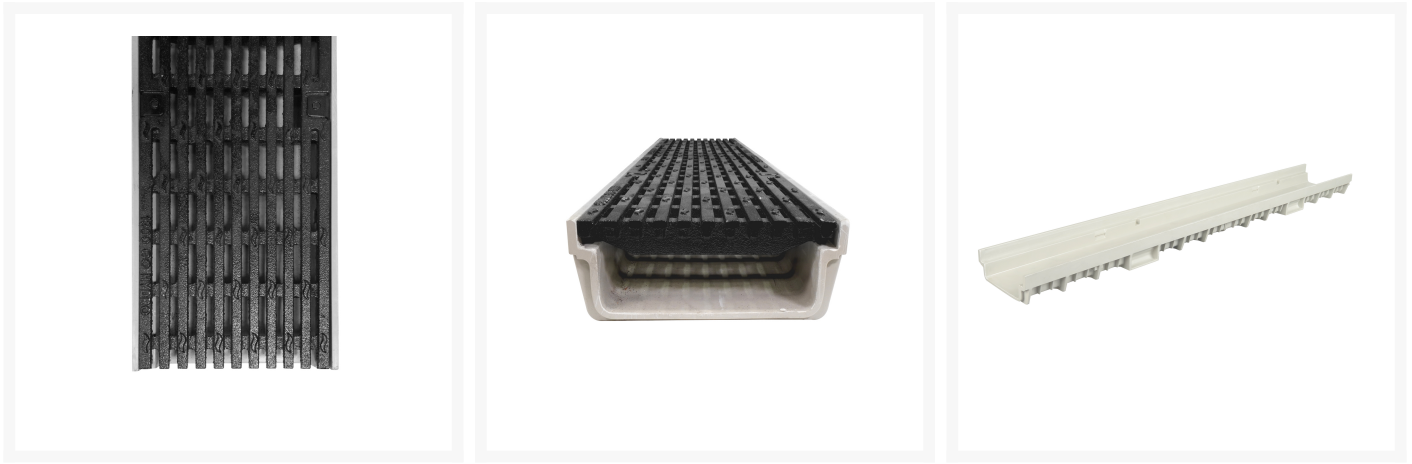
---

# Mearin Plus F150 150mm GRP shallow channel 75mm deep C/W 172mm ductile iron heelguard grate, class D, CLIPFIX

## Product Images

---





## Short Description

---

Mearin Plus F150 150mm GRP shallow channel 75mm deep C/W 172mm ductile iron heelguard grate, class D, CLIPFIX

## Description

---

The Mearin Plus shallow channel is a lightweight, durable, and easy-to-install drainage channel that is ideal for use in areas with limited ground clearance. It is made of GRP (glass-reinforced plastic), which is resistant to chemicals, salt, and oils. The ductile iron Class D heelguard grate provides a sleek black finish, while the Clipfix system makes it easy to install and remove the grate. Features • Shallow depth for area's where construction clearance is limited • Made from lightweight and durable GRP material • Class D grate to AS3996-2019 • Versatile for a variety of applications • Excellent value for money Benefits • Easy to install and maintain • Strong and durable • Eco-friendly • Corrosion resistant channel • Excellent value for money Applications • Car Parks • Warehouse & Industrial sites • Driveways • Train Stations • Other Areas where construction clearance is limited

## Additional Information

---

CODE	ACP-140750K3
U.O.M	Each
Material	Glass Reinforced Plastic
Channel Depth	75mm
Channel Width	150mm
Range	Mearin Plus
Channel Length	1000mm
Grate Safety	Heelguard
Load Rating	CLASS D
Locking Type	Clipfix
Grate Material	Ductile Iron
Shallow/Discrete	Shallow
Channel Material	Glass Reinforced Plastic
Swatch	no_selection

