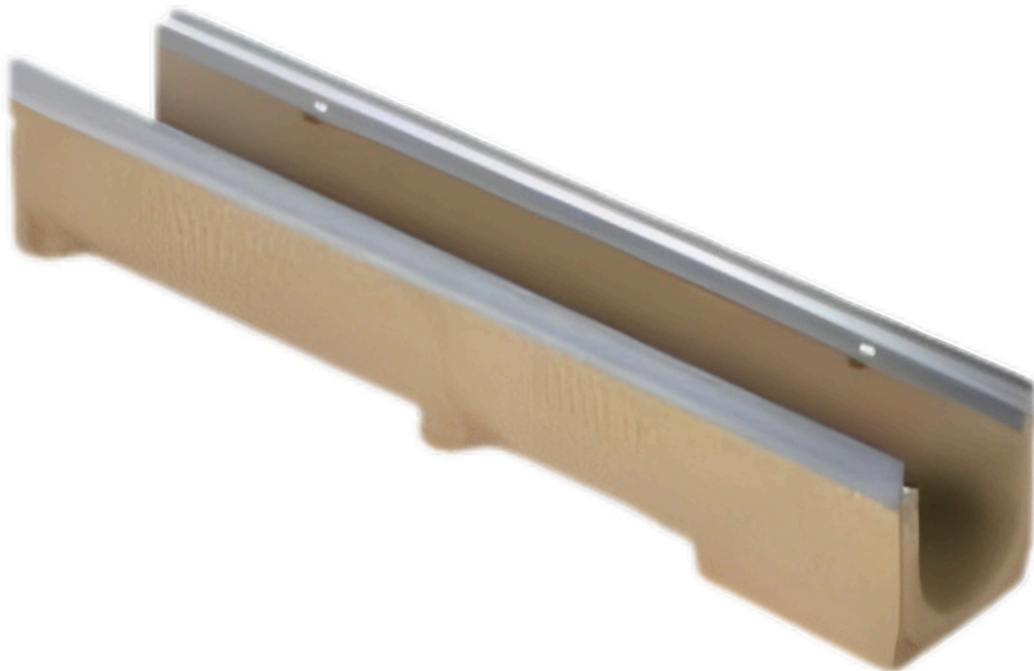


---

# Z1000 100mm Gal Steel Edge Polymer Concrete channel 150mm depth

## Product Images

---



## Short Description

---

MEADRAIN Z1000: High-quality, polymer concrete channel with galvanized steel edge. Perfect for pedestrian zones, parks, and car parks. Easy installation. 150mm depth.

## Description

---

The MEADRAIN Z1000 drainage channel system is made from high-quality polymer concrete and is ideal for use in pedestrian zones, green open spaces, and car parks. Owing to its design and the wide selection of cover gratings, these channels blend in perfectly with the cityscape. The MEADRAIN Z1000 is available in a 100mm clear width<sup>1</sup>.

MEADRAIN Z1000 drainage channel systems are manufactured with a galvanised steel rail and are suitable for all drainage applications up to loading class D. The channels are easy to install.

## Additional Information

---

CODE	ACP-155401
U.O.M	Each
Swatch	no_selection

