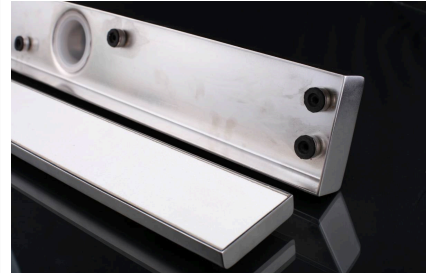


# Allure – Stainless Channel

## Product Images



# Short Description

---

Hydro Construction Products specialises in providing modern and effective drainage solutions. We provide unrivaled service, so you get the drainage solution you need. We are proud to present our Hydro Performer Series of traditional square style floor wastes and linear drainage systems, available with stainless steel or uPVC channels and accessories.

## Description

---

**Applications:**

- Balcony
- Bathroom
- Courtyard/Patio
- Paved Area
- Pool Area
- Shower
- Residential
- Sports & Leisure Facilities
- Hotels
- Restaurants

**Stainless Steel Channel with Heelguard Grate**

Modular drainage kit with removable heelguard stainless steel grate, drainage channel and hair filter.

Code	Width	Depth	Length	Outlet
SHG-70/900	70mm	25mm	900mm	50
SHG-70/1000	70mm	25mm	1000mm	50
SHG-70/1200	70mm	25mm	1200mm	50
SHG-70/1500	70mm	25mm	1500mm	50
SHG-100/900	100mm	25mm	900mm	80
SHG-100/1000	100mm	25mm	1000mm	80
SHG-100/1200	100mm	25mm	1200mm	80
SHG-100/1500	100mm	25mm	1500mm	80

**Stainless Steel Channel with Tile Insert**

Modular full stainless steel drainage kit available with tile insert grate, a stainless steel drainage channel and hair filter.

Code	Width	Depth	Length	Outlet Size
STI-70/900	70mm	25mm	900mm	50
STI-70/1000	70mm	25mm	1000mm	50
STI-70/1200	70mm	25mm	1200mm	50
STI-70/1500	70mm	25mm	1500mm	50
STI-100/900	100mm	25mm	900mm	80
STI-100/1000	100mm	25mm	1000mm	80
STI-100/1200	100mm	25mm	1200mm	80
STI-100/1500	100mm	25mm	1500mm	80

## Additional Information

CODE	Allure – Stainless Channel
U.O.M	Each
Swatch	no_selection

