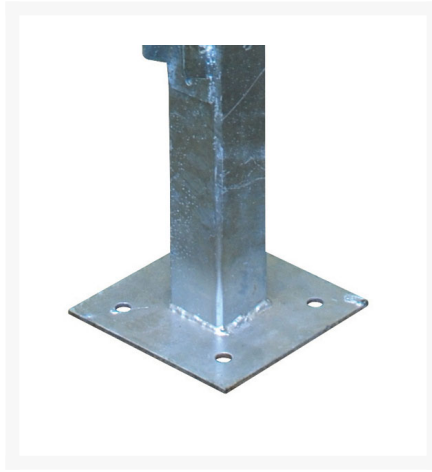

XT Barrier Edge Protection System - Galvanised Square Posts

Product Images





Short Description

Posts to suit XT Barrier Edge Protection System™. 1005mm high galvanized post with 152mm square mounting flange. Tested & approved to AS 4994.1:2009

Description

The XT Barrier Edge Protection System™ mesh panels can be fixed using these specialised XT Barrier System™ Posts.

Made from galvanised 50mm square RHS, these 1005mm high posts incorporate a top and bottom wire panel holding lugs with slide and lock assemblies, making panel installation and removal quick and simple.

The Fortress XT Barriers can be fixed to concrete or paving using these posts. The low profile square fixing flange is easily fixed with masonry bolts however engineering advice must be sought for requirements of concrete specifications.

- Ideal for fixing to concrete paved areas
- 152mm square x 5mm fixing flange
- Fix with 4 x 13 mm diameter holes for use with four 10 x 75mm masonry bolts or similar
- Strong galvanized 50mm square RHS
- Tested & approved to AS 4994.1:2009
- Screw bolts sold separately
- Secure locking lugs hold mesh panels in place

Additional Information

CODE	07-EPPOST
U.O.M	Each
Weight	250
Material	Galvanised
Height	1005 mm
Pallet Quantity	40

